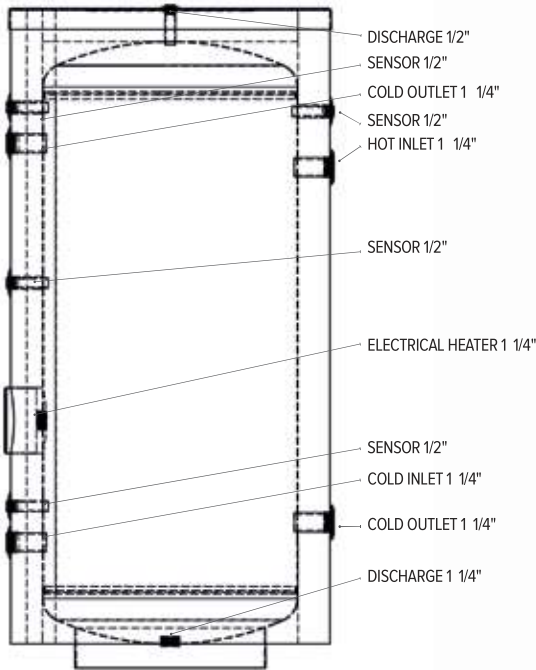


SOLIBUFFER

- Minimum heat loss with polyurethane isolation
- Easy installation
- Applicable to heat pump systems
- Lightweight, aesthetic appearance, long life and maintenance-free
- Optional electrical heater
- Easy montage due to small size
- 5 year warranty



TECHNICAL SPECIFICATIONS

	BUFFER 100	BUFFER 200	BUFFER 300	BUFFER 500	BUFFER 1000
Product Code	MA-0004	MA-0003	MA-0360	MA- 0490	MA- 0491
Height(mm)	795	1245	1770	1653	2033
Diameter(mm)	542	542	542	750/807	1017
Net Weight(kg)	50	60	70	90	180
Volume/ cubage(lt)	132	170	245	454	970
Insulate	50 mm /40 kg/m <sup>3</sup>	50 mm /40 kg/m <sup>3</sup>	50 mm /40 kg/m <sup>3</sup>	50 mm /40 kg/m <sup>3</sup> 80 mm /18 kg/m <sup>3</sup>	80 mm /18 kg/m <sup>3</sup>
Insulating Material	Polyurethane	Polyurethane	Polyurethane	Polyurethane / 18 Density Foam Rubber	18 Density Foam Rubber
Outer Cylinder Materials	Electrostatic Powder Painted ST 37 Steel	Electrostatic Powder Painted ST 37 Steel	Electrostatic Powder Painted ST 37 Steel	Electrostatic Powder Painted ST 37 Steel /Leaherette Jacket	Leaherette Jacket